

# VILLA CAMBRAY



**5**

BEDROOMS

**5**

BATHROOMS

**8,450**

SQ FT

**2.1**

ACRES

---

## POA ST. LAWRENCE

Villa Cambray looks set to raise the bar in Jersey with carefully conceived, contemporary living within a luxurious 'one-of-a-kind' new home - currently in the course of construction. Bathed in natural light from its South facing orientation, this magnificent property will boast breathtaking views towards the coast - preserved for generations to come due to ownership of the surrounding grounds and topography of the land. Arranged over three levels with lift access to all floors, the 8,500sq.ft of accommodation will be exquisitely appointed throughout using the finest of materials - sourced with an ethical mindset. Five-bedroom suites perfectly compliment the range of reception spaces, leisure suite, cinema room, fully-climatized garage salon with turntable lift and climate-controlled wine room/tasting area. Future-facing technology will feature throughout with intelligent lighting solutions and fibre communication to ensure this property can not only provide exquisite living spaces...

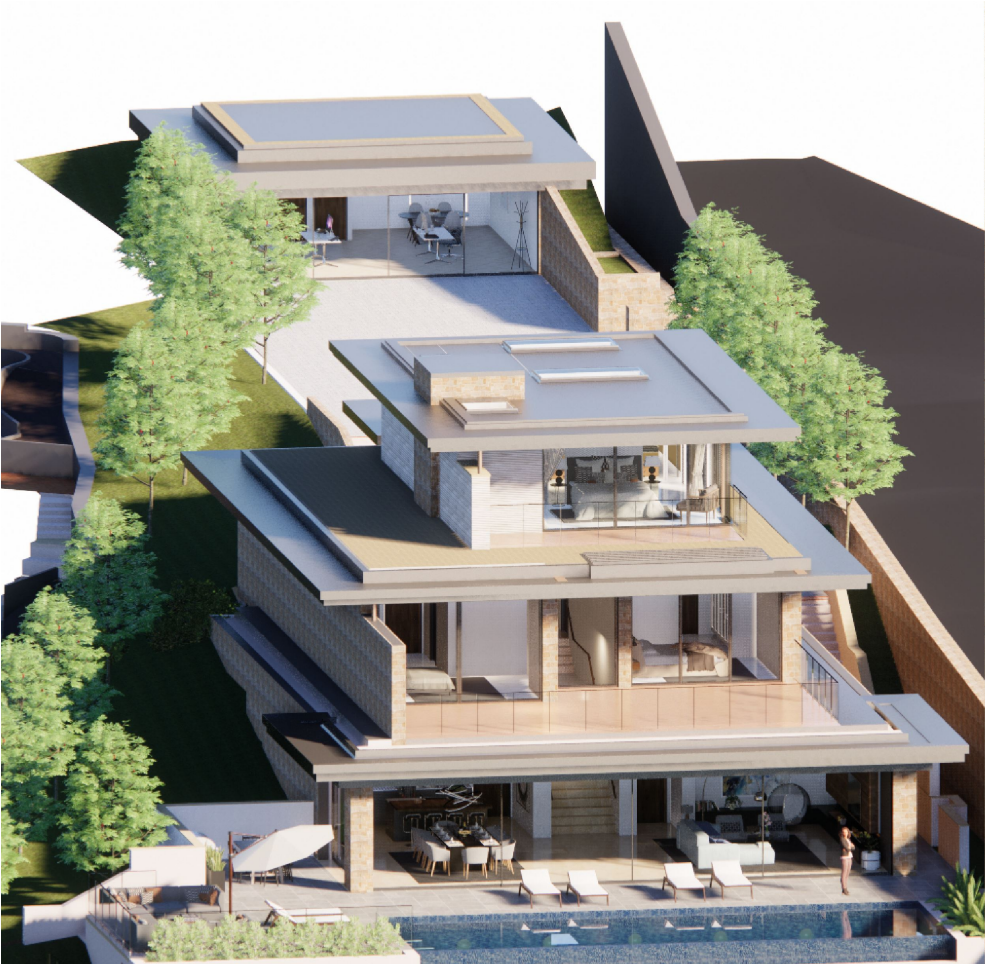


**LIVINGROOM**

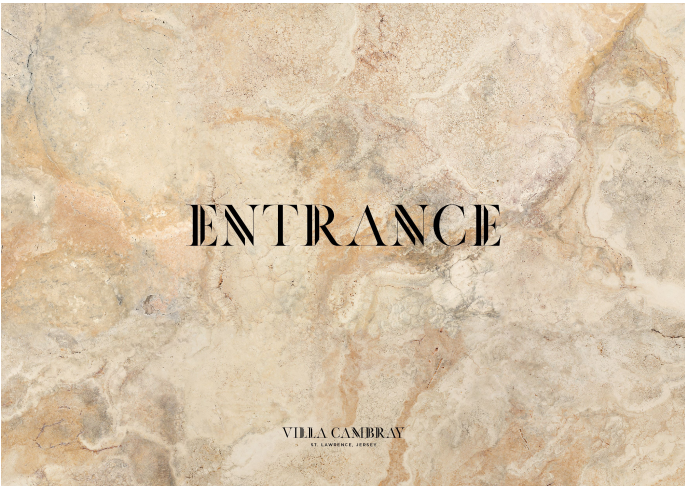
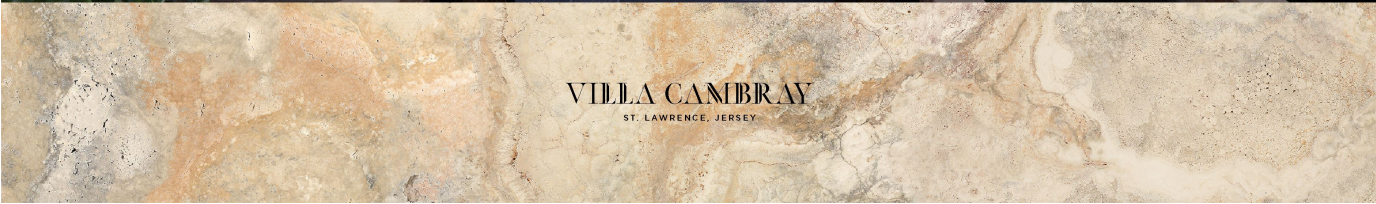
The Channel Island Estate Agent

---

















VILLA CAMBRAY  
ST. LAWRENCE, JERSEY



VILLA CAMBRAY  
ST. LAWRENCE, JERSEY



VILLA CAMBRAY  
ST. LAWRENCE, JERSEY



VILLA CAMBRAY  
ST. LAWRENCE, JERSEY

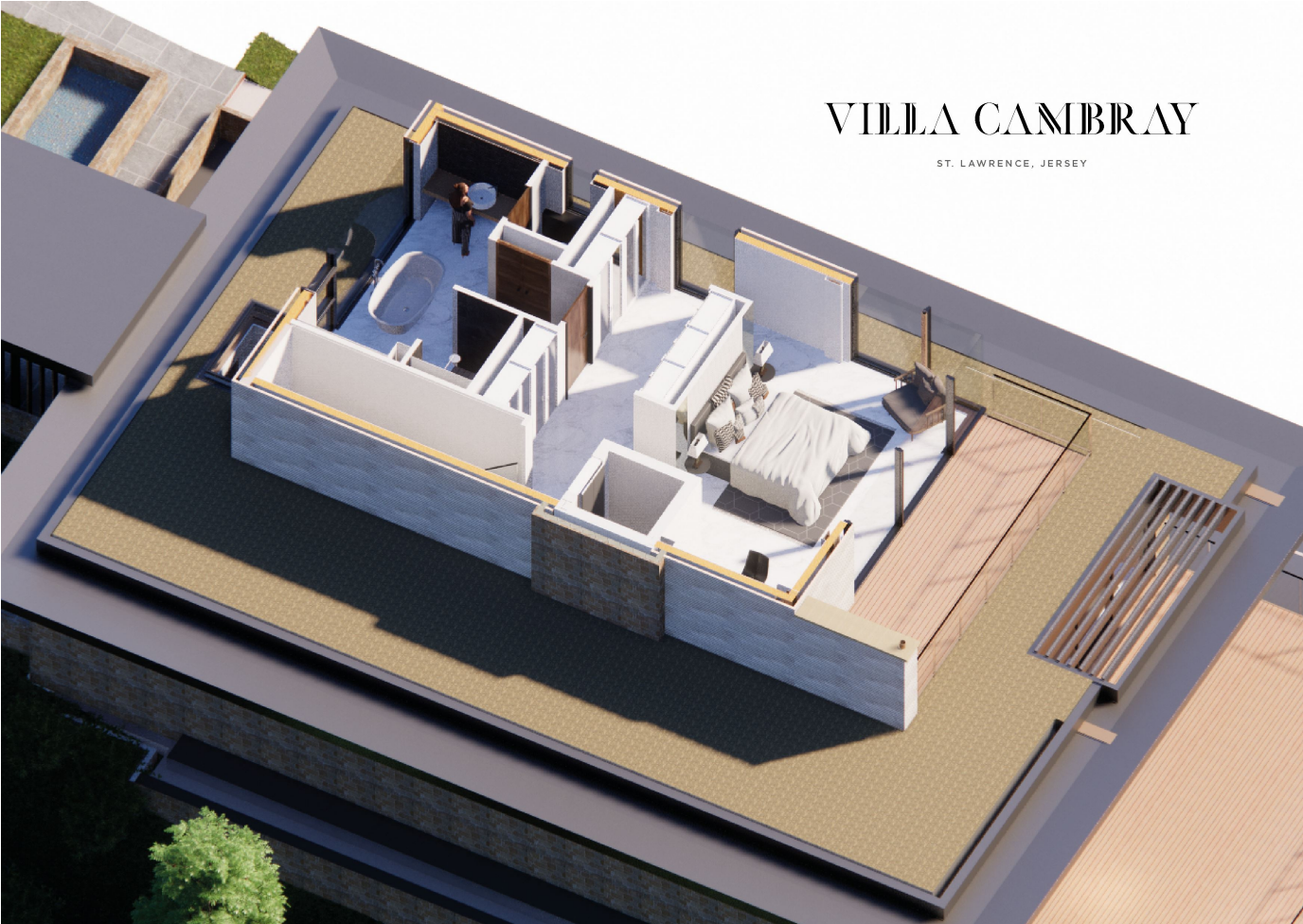
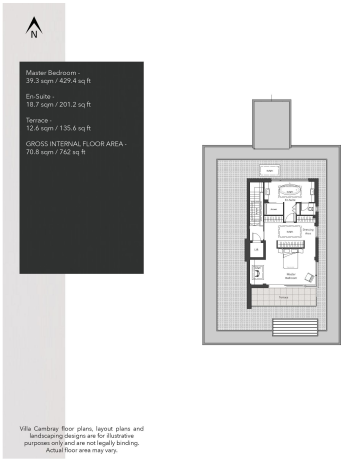


VILLA CAMBRAY  
ST. LAWRENCE, JERSEY

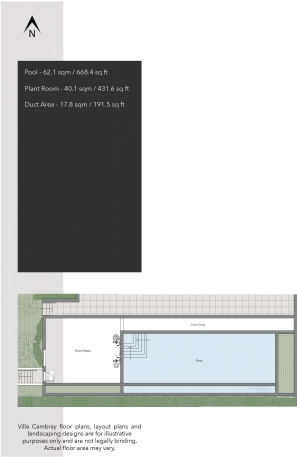












VILLA CAMBRAY  
ST. LAWRENCE, JERSEY



VILLA CAMBRAY  
ST. LAWRENCE, JERSEY

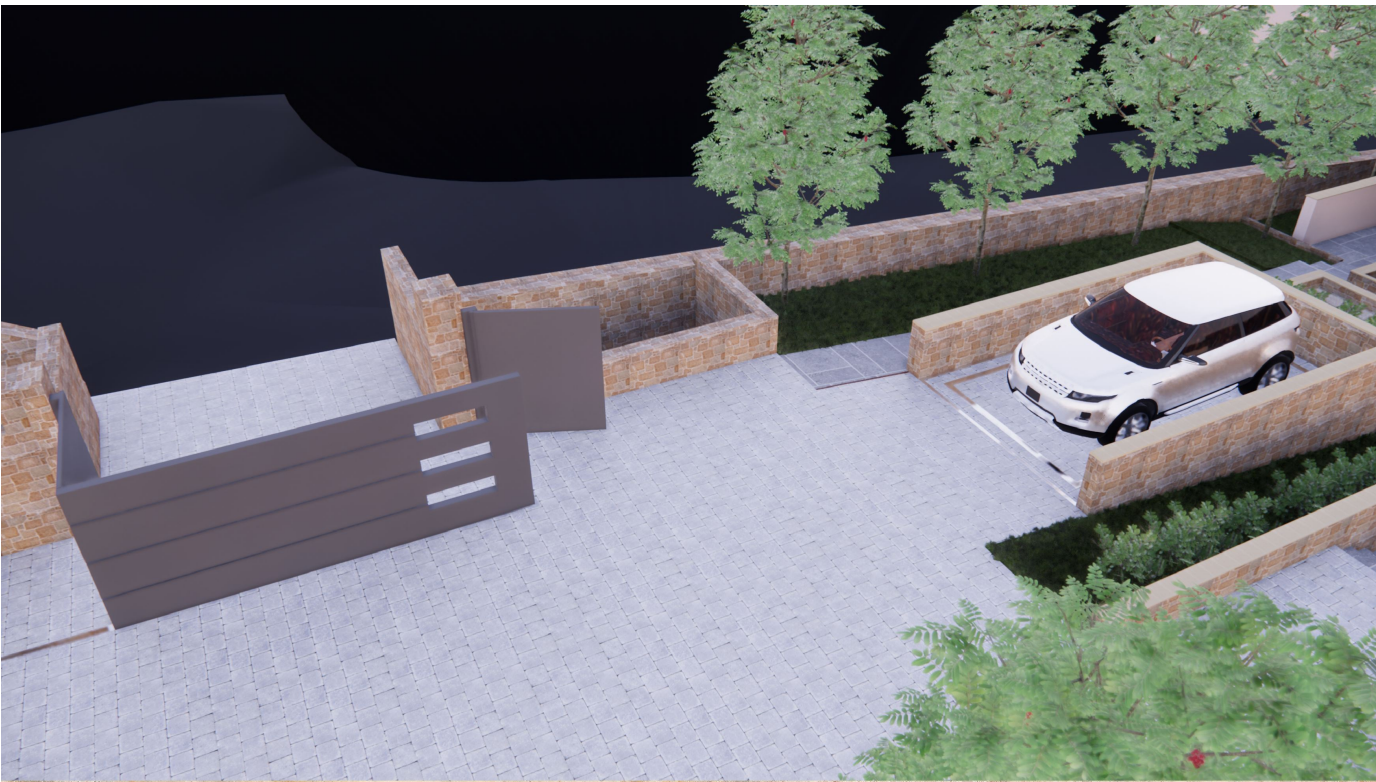














### KEY FACTS

Access to state-of-the-art audio-visual technology

Spacious and fully-equipped gymnasium

12-seater tiered cinema

Sumptuous subterranean,  
fully-climatized garage salon with turn  
table

Discrete handmade high-end front  
kitchen

Substantial back kitchen and pantry

Outdoor kitchen with integral chefs  
BBQ

Climate controlled 1,000 bottle wine  
room and tasting foyer

Advanced CCTV and security systems

### INCLUSIONS

As per inventory

These particulars are supplied on the understanding all negotiations by Livingroom are conducted through this office. We understand these particulars to be correct but we do not guarantee their accuracy nor do they form part of any contract. Any floor plans provided are for the purposes of identification only and are not of absolute delineation. Measurements and areas illustrated are approximate and should not be relied upon. Livingroom have not undertaken a detailed survey, nor tested the services, appliances and specific fittings.

### POA



**LIVINGROOM**

The Channel Island Estate Agent